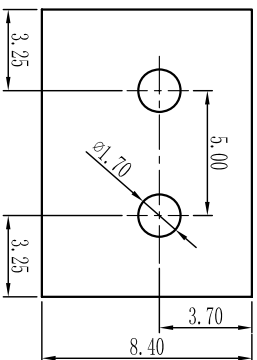
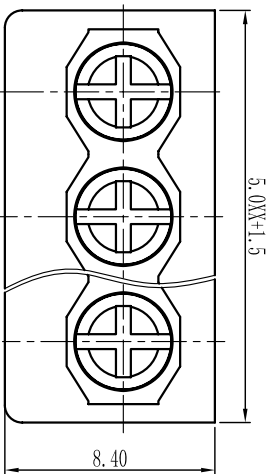
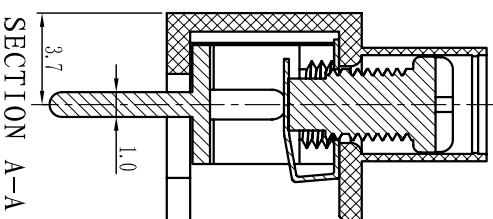
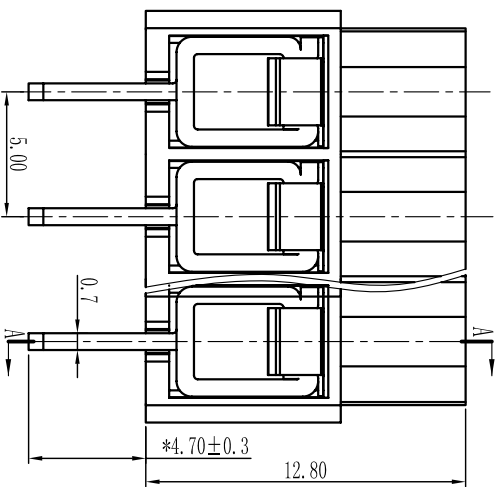




慈溪市万捷电子有限公司

CIXI WANJIE ELECTRONIC CO., LTD

产品规格书
product specification



电气性能/Electrical
 参考标准/Standard: UL IEC
 额定电压/Rated voltage: 300V 250V
 额定电流/Rated current: 15A 24A
 接触电阻/Contact resistance: 20m Ω
 使用线径/Wire range: 26-14AWG 2.5mm²
 耐电压/Withstanding voltage: AC2000V/1Min
 绝缘电阻/Insulation resistance: 500M Ω /DC500V

机械性能/Mechanical

温度范围/Temp.Range: -40 $^{\circ}$ C+105 $^{\circ}$ C
 扭矩/Torque: 0.4Nm(3.5lb \cdot in)
 剥线长度/Strip length: 6-7mm

尺寸/Dimensions

间距/Pitch: 5.0mm
 极数/Poles: 2P-24P

材质及电镀/Material

塑件/Housing: PA66, UL94V-0
 螺丝/Screws: M2.5, steel Zinc plated
 方针/Pin header: Brass, Ni plated
 弹片/Shrapnel: Phosphor bronze, Ni plated

TOLERANCES EXCEPT AS NOTED

	linear dimension	fillet	chamfer	short angle sid	≡	—	∥	⊥
variable range	over 6 to 30 over 30 to 120 over 120 to 480 over 480 to 6	all	over 6 to 6	over 10 to 10 over 50 to 50 over 120 to 120	all	to 5 to 5	over 5 to 30 over 30 to 120	over 120 to 120
tolerance	±0.1 ±0.2 ±0.3 ±0.5 ±0.9	±0.2 ±0.5	±1	1 $^{\circ}$ 30 $^{\circ}$ 20 $^{\circ}$ 10 $^{\circ}$	0.5 0.025 0.06 0.12 0.4			

订购方式：
HOW TO ORDER

- - P - - - - -

未定义/No definition
 单侧插/Sing pinch
 双侧插/Double pinch

客户需求
 Customer Request

灰色/Grey	10	绿色/Green	40	透明/Transparent	70
蓝色/Blue	20	棕色/Orange	50	黄色/Yellow	80
黑色/Black	30	红色/Red	60	白色/White	90

单位/UNITS mm 尺寸/SIZE A4 比例/SCALE 比例

第一视角/FIRST ANGLE PROJECTION



慈溪市万捷电子有限公司
CIXI WANJIE ELECTRONIC CO., LTD

名称/NAME

WJ166-XXP-1Y-001